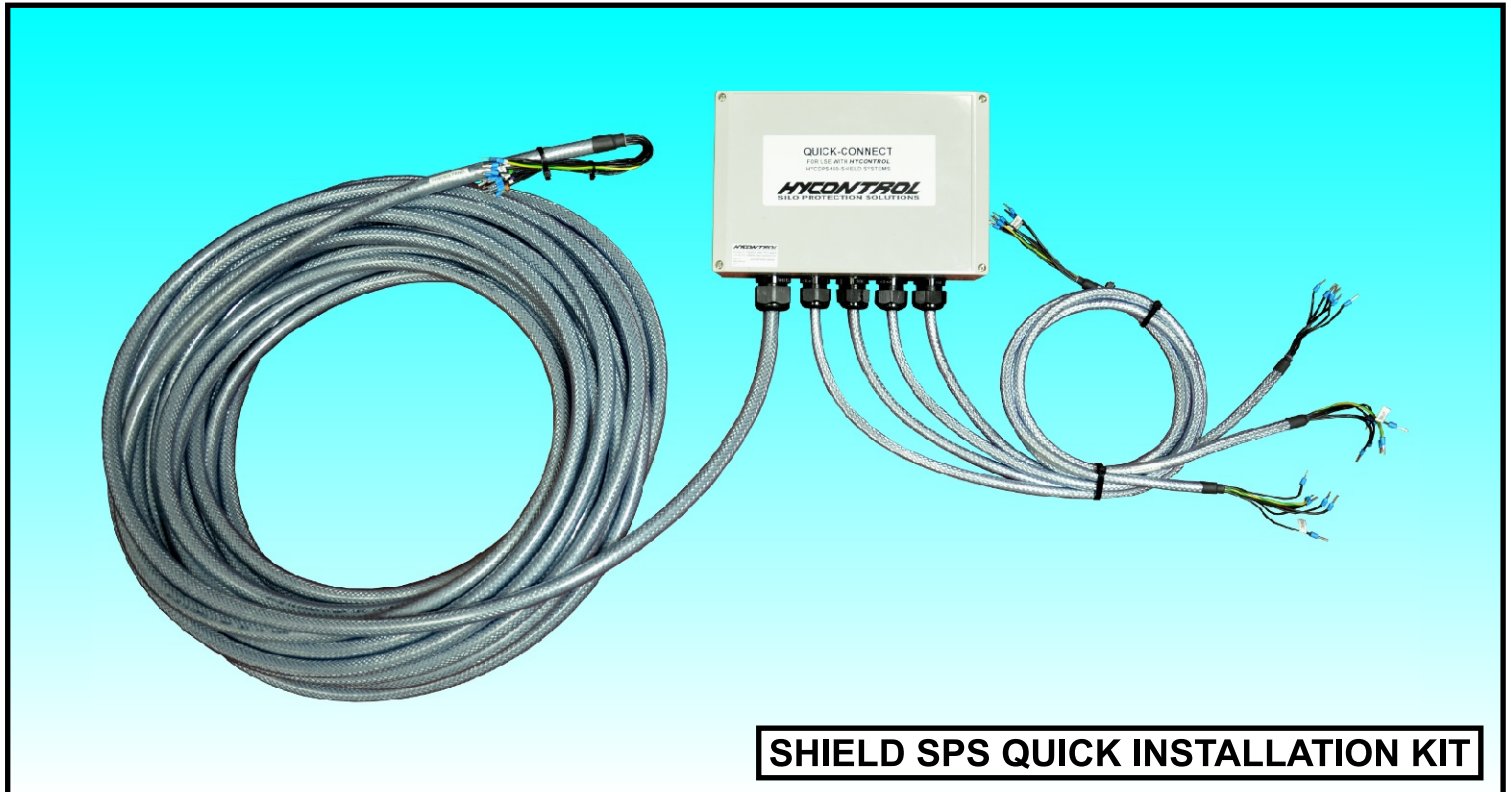


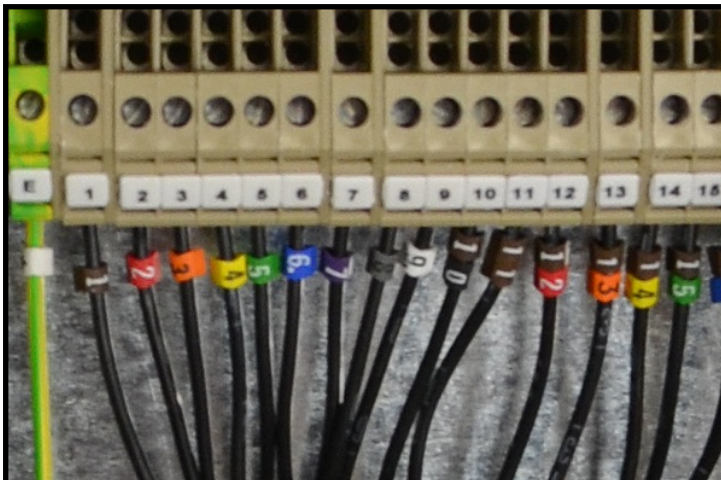
SHIELD SPS - QUICK INSTALLATION KIT



SHIELD SPS QUICK INSTALLATION KIT

The pre-wired **quick installation kit** allows for fast, simplified installation of the Hycontrol SHIELD Silo Protection System. It is a **WIRE BY NUMBERS** kit designed to eliminate the chance of wiring mistakes.

The Quick-Connect box attaches to the SHIELD mounting pod on the silo-top and is connected to the labelled device (control box, level probe etc.). The multicore cable then runs down the silo to meet the panel at the fill point. **Simply terminate each numbered core wire in the associated numbered terminal and, when the system is powered, everything will be correctly connected.** That's it! What could be more simple than that?



HYCONTROL
SILO PROTECTION SOLUTIONS